

Gioacchino Rossini
L'Italiana in Algeri Overture

FLUTE I

Andante

7 10 6 1

sf *sf* *sf*

[A] 20 30 *Allegro* *p*

sf *p* *sf* *p* *p*

[B] 40 5

p *cresc*

50 *mf cresc. sempre*

[C] *f*

60

[D] *ff*

[E] 70 [F] 80 3 2 8

Rossini — L'Italiana in Algeri Overture

2

FLUTE I

90 Solo *p*

G 100 Solo *p*

H 110 *pp*

cresc.

I 120 *mf cresc.* *f cresc.*

L 130 *ff*

M 140 6

N 150 *p sf p sf p*

Rossini — L'Italiana in Algeri Overture

FLUTE I

3

[O]



[P]



[Q]

180



[R]



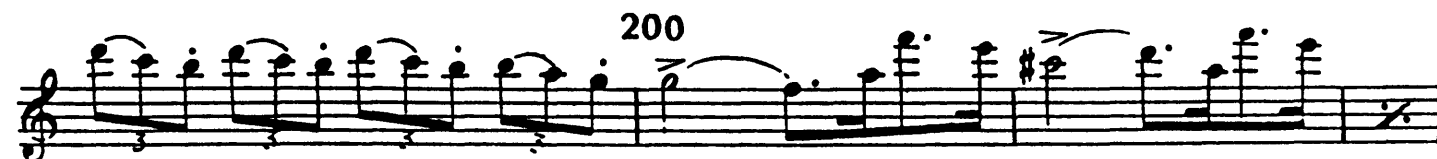
190



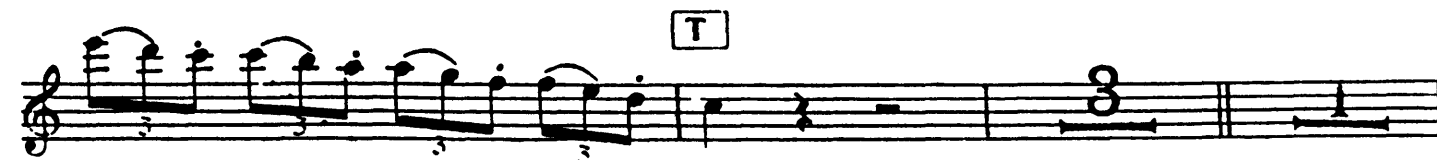
[S]



200



[T]



Rossini — L'Italiana in Algeri Overture

4

210 **FLUTE I**

p *p* *cresc.*

U 220

pp stacc. *cresc.* *p cresc.* *mf cresc.* *f cresc.*

V 230

240

Z

stacc. 250

Gioacchino Rossini
L'Italiana in Algeri Overture

FLUTE II

Andante

7 10 6 1

ff *sf*

A 20 2 6 2 30

sf *f*

Allegro

p *sf* *p* *sf* *p*

B 40 7 *p*

50 *mf cresc. sempre* *ff* C

60

D 70 *ff*

sf

E 80 2 F 90 4 G 100 6 H 110 4 8

sf

2

FLUTE II

I *Ob. e Cl.* 120 *mf cresc.*

L 130 *f cresc.* *ff*

M 140 *6*

N *p sf p sf p*

150 *sf p sf p*

O 160 **P** *mf cresc. sempre*

ff

170

Q 180 **R** 190 *f*

Rossini — L'Italiana in Algeri Overture

FLUTE II

3

[S] 200 [T] 210

(Ob. solo) (Ob. solo) (Fl. I.)

Fl. I. *pp*

cresc.

[U] 220

pp stacc. *cresc.*

p cresc. *mf cresc.*

[V] 230

f cresc. *ff*

240 [Z]

stacc.

250